



CTG

Highly innovative facade
technology is looking for
investors / customers

Andreas Herrmann info@ctg-mbh.com

+49(0) 151 5090 5968

CaseTecGroup



Sustainable Ecological



bamboo forest



=

laminated bamboo



=

supporting structure



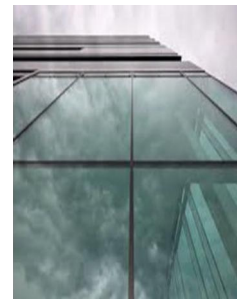
curtain wall



Fast growth, lightweight material, cheaper, screw fixing

Bamboo curtain wall interior view

Same stability as steel





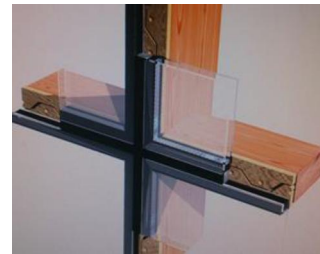
reduced CO² Emission (energy efficient)



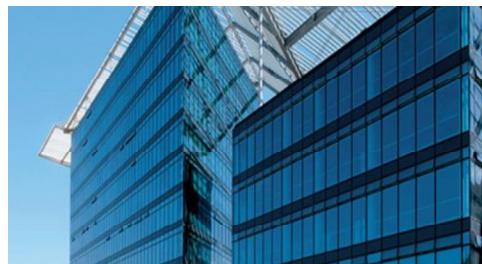
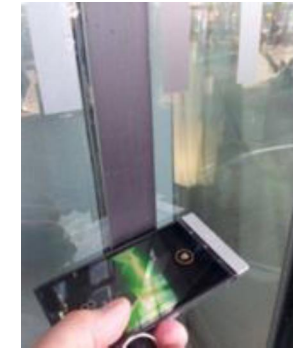
building envelope



bolted



Flush, sealed





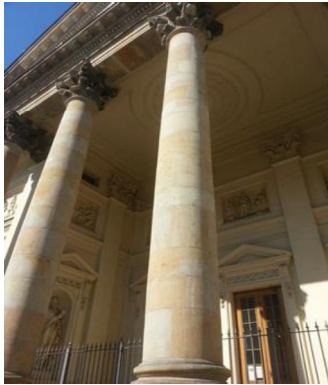
Engineered Stone Veneer



Flexible, flexible, bendable, column cladding,

Any type and color,

**engineered stone veneer
glued onto glass panes**





- 2 operations instead of conventional 8
- pre-assembled glass façade, sealed and flush
- Reduced CO² emissions compared to traditional façades due to sealed construction and therefore reduction of air leakage
- Bendable material allows for more flexibility in design
- Ecologically sustainable due to bamboo structure
- Column cladding simplified by flexible material
- Study of the University of Dortmund: curtain wall has a future
- Increased durability of stone veneer compared to natural stone
- Frameless glass door and window units available with bullet resistant glass